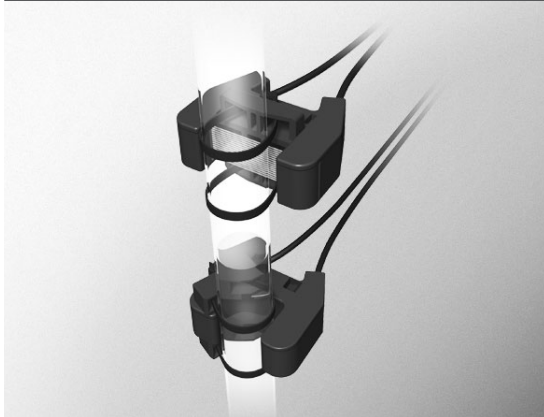


Pipe-Mounted Fiber Units Liquid-Level Sensors

HPF-T032 HPF-T034

Fail-safe detection uses 2 different sensing methods for detection of upper and lower limits of tank liquid level.



- Array of 16 optical axes eliminates the effects of air bubbles and water droplets.
- PFA-jacketed fiber
- Usable with a wide range of pipe diameters.
- Location of the optical axes is clearly marked.

Array of 16 optical axes eliminates the effects of air bubbles and water droplets.

Adverse effects from air bubbles and water droplets are reduced, resulting in reliable detection.



HPF-T034

Inherently safe product

R4 | 5m
Cut to length



PFA-jacketed fiber

Run fiber-optic cables through machines and equipment safely, thanks to complete protection by chemical-resistant resin.

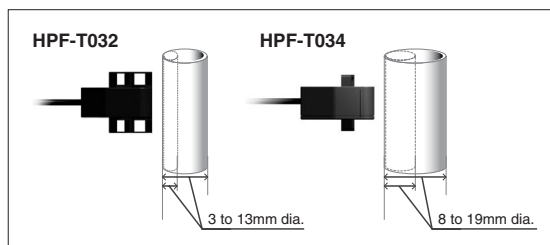
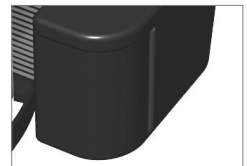
Location of the optical axes is clearly marked.

Recognize at a glance where the array of optical axes is located.

Usable with a wide range of pipe diameters.

Suitable for 3 to 19mm dia. pipes

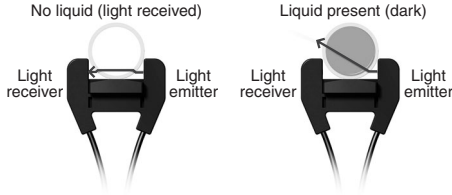
HPF-T032



Refraction-based sensing ensures reliable operation.

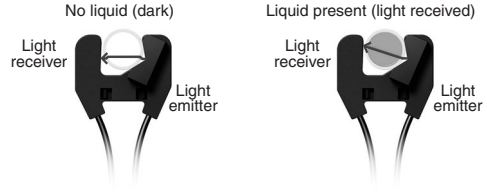
HPF-T034

Principle



HPF-T032

Principle



Fail-safe concept for pipe-mounted liquid-level sensors

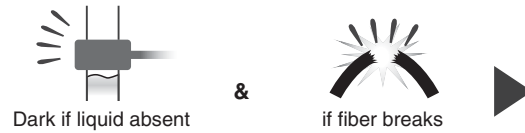
Upper limit detection



Required optical system

Light circuit closed when no liquid:
HPF-T034

Lower limit detection



Required optical system

Light circuit closed when liquid present:
HPF-T032

CATALOG LISTING

Model	Shape	Pipe diameters	Features	Bend radius	Catalog listing
Liquid level detection		3 to 13mm	Receives light when liquid present	5m Cut to length	HPF-T032
		8 to 19mm	Receives light when liquid absent		HPF-T034

SPECIFICATIONS

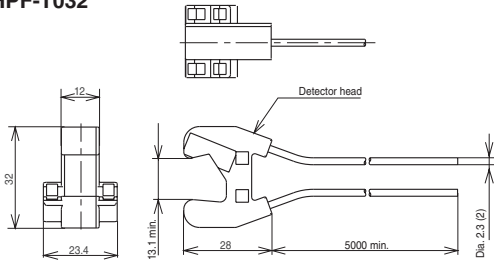
Catalog listing	HPF-T032	HPF-T034
Detection method	Thru scan	
Applicable amplifier	HPX-AG / HPX-T / HPX-ETS / HPX-H	
Applicable pipe	PFA transparent pipe, 1mm thick	
Standard target liquid	Water*	
Operating temperature	-30 to +70°C	
Material	Body: Polyester imide. Fiber: Polyethylene (PFA coating)	

*In some cases operation may not be reliable due to type of pipe, degree of liquid transparency, or liquid refractive properties. Be sure to confirm operation before actual use. When using pipes other than those of recommended materials and thicknesses, be sure to test in advance that operation is satisfactory, or contact Yamatake Corporation.

EXTERNAL DIMENSIONS

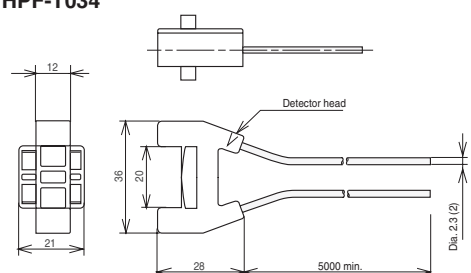
(unit: mm)

HPF-T032



CAD File No. EC 10226

HPF-T034



CAD File No. EC 10307