

LUBE USA

CENTRALIZED LUBRICATION SYSTEMS

the name for advanced technology



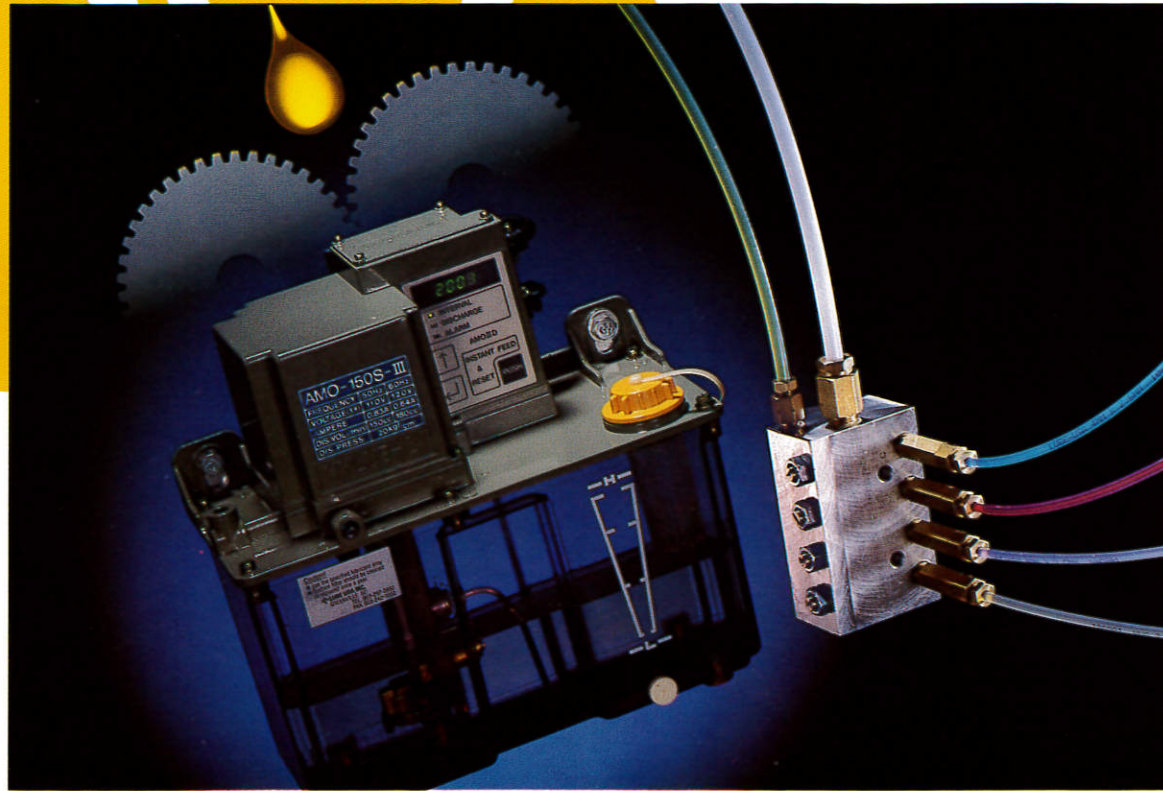
FITTINGS

&

ADAPTERS

LUBRICATION

Lube USA pumps the right amount where you need it, when you need!



Lube USA products are used wherever bearings, chain conveyers and other mechanical parts must be centrally, automatically and precisely lubricated with oil or grease.

Over 40 years have passed since Lube Corporation introduced their first Lubricating System. Since that time Lube Corporation and Lube USA have continued their unremitting pursuit of technical advancement consisting of the integration of high speed, precision and automation within our Centralized Lubrication Systems. As an international company, Lube's expertise in technical lubrication control or tribology, together with our high standards for quality manufacturing, customer service, and technical support have made us the leader in this field.

- Single Point Automatic Lubricators (1 mo. - 24 mo.)
- Computerized Oil/Grease Delivery Systems (Up to #NLGI Grade 2)
- Single Line Resistance
- Positive Displacement Systems
- Progressive Systems
- Chassis Lubrication
- Spindle Lubrication
- Chain Lubrication
- Stock Lube Systems - LubeRoller - Jet Spray
- Dual Filtration Recirculating System
- Central Mounting Options for Grease/Oil
- Complete inventory of tubing and accessories that are compatible with most major manufacturers of centralized lubrication systems.
- Grease Guns, Oilers/Tubing

Ideal for all industry applications

- Machine Tool
- Automotive
- Textile
- Packaging
- Metal Stamping
- Food Processing
- Mining
- Pulp & Paper
- Woodworking



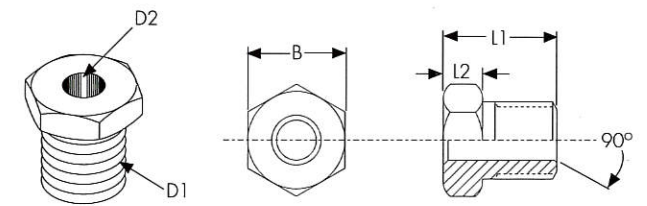
FITTINGS & ADAPTERS

Compression Hardware

► COMPRESSION BUSHINGS

Part No.	Tube O.D.	DIMENSIONS INCH (METRIC)				
		L1	L2	B	D1	D2
106252	(4)	0.46 (11.6)	0.16 (4)	(10)	(M8x1)	(4.1)
106253	(4)	0.46 (11.6)	0.16 (4)	(8)	(M8x1)	(4.1)
186252	(4)	0.46 (11.6)	0.16 (4)	(10)	5/16-24	(4.1)
186253	(4)	0.46 (11.6)	0.16 (4)	(8)	5/16-24	(4.1)
206252	(6)	0.49 (12.5)	0.16 (4)	(10)	(M10x1)	(6.1)
207252	(8)	0.63 (16)	0.18 (4.5)	(14)	(M14x1.5)	(8.1)

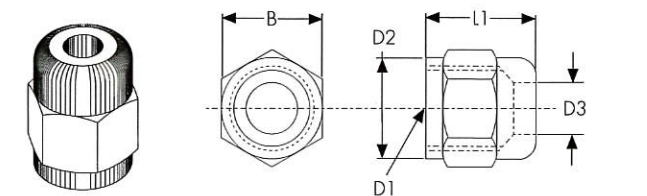
3/8 Hex available upon request



► COMPRESSION NUTS

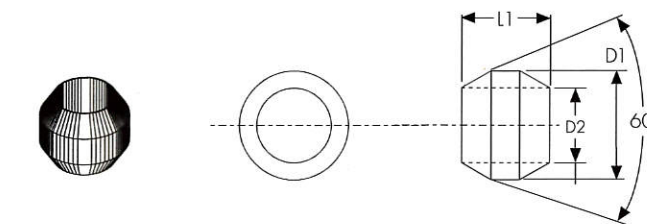
Part No.	Tube O.D.	DIMENSIONS INCH (METRIC)				
		L1	B	D1	D2	D3
106251	(4)	0.51 (13)	(10)	(M8x1)	(10)	(4.1)
186251	(4)	0.51 (13)	(10)	5/16-24	(10)	5/32 (4.1)
206251	(6)	0.51 (13)	(12)	(M10x1)	(12)	(6.1)

3/8 Hex available upon request



► COMPRESSION SLEEVES

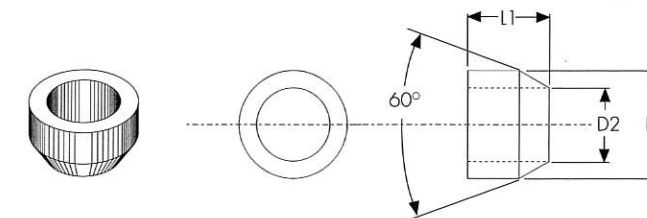
Part No.	Tube O.D.	DIMENSIONS INCH (METRIC)		
		L1	D1	D2
106254	(4)	0.19 (5)	0.23 (6)	0.16 (4.1)
206254	(6)	0.23 (6)	0.32 (8)	0.24 (6.1)
207254	(8)	0.26 (6.5)	0.39 (10)	0.32 (8.1)



► COMPRESSION SLEEVES

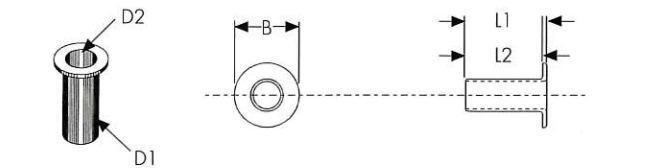
Part No.	Tube O.D.	DIMENSIONS INCH (METRIC)		
		L1	D1	D2
166254	(4)	0.18 (4.5)	(∅ 6)	(∅ 4.1)

Use these when nylon tail tube will be moving. Prevents cutting.



► TUBE INSERTS

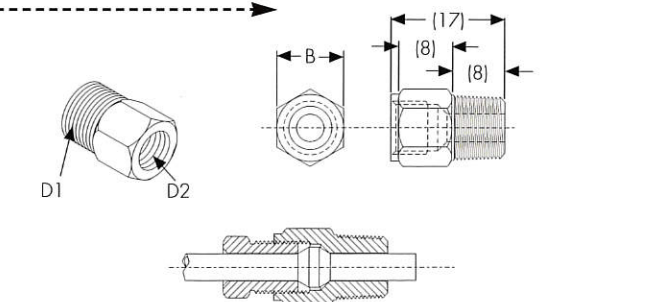
Part No.	DIMENSIONS INCH (METRIC)				
	L1	L2	B	D1	D2
106271	0.39 (10)	0.37 (9.5)	0.15 (3.8)	0.10 (2.5)	0.08 (1.95)
206271	0.39 (10)	0.37 (9.5)	0.23 (5.8)	0.16 (4)	0.14 (3.45)
207271	0.61 (15.6)	0.58 (15.1)	0.30 (7.7)	0.23 (5.8)	0.21 (5.3)



Specialty Fittings

► SPECIALTY ADAPTERS

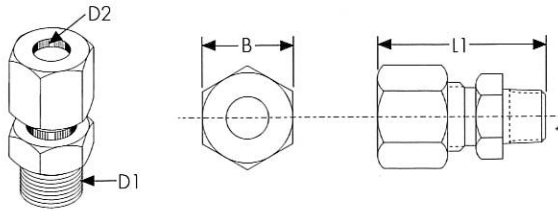
Part No.	B	DIMENSIONS INCH (METRIC)	
		D1	D2
106011	(10)	(1/8 BSPT)	(M8x1)
186011	(10)	1/8 NPT	5/16-24



781 Congaree Rd., Greenville, SC 29607
800-326-3765 • TEL 864-297-3950 • FAX 864-242-1652

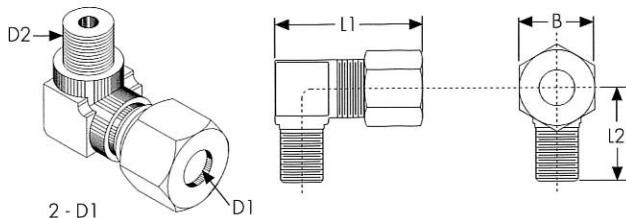
FITTINGS & ADAPTERS

Compression Hardware Assemblies



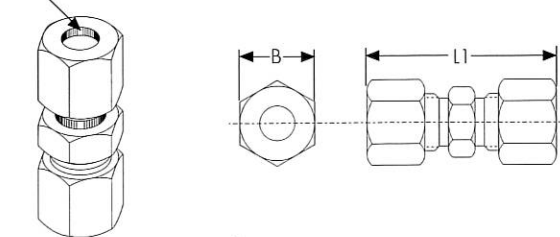
STRAIGHT COMPRESSION ADAPTER

Part No.	DIMENSIONS INCH (METRIC)			
	L1	B	D1	D2
250101	1.53 (39)	(12)	(1/8 BSPT)	(6)
250121	1.22 (31)	(17)	(1/8 BSPT)	(8)



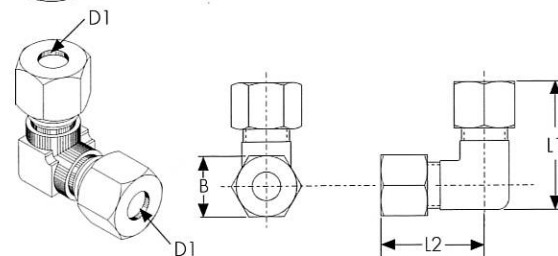
90° COMPRESSION ADAPTER

Part No.	DIMENSIONS INCH (METRIC)				
	L1	L2	B	D1	D2
250103	1.03 (26)	.075 (19)	(12)	(6)	(1/8 BSPT)
250123	1.10 (28)	0.87 (22)	(17)	(8)	(1/8 BSPT)



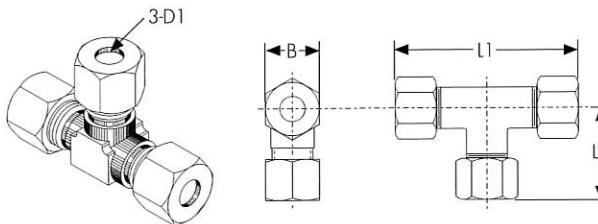
DOUBLE COMPRESSION UNIONS

Part No.	DIMENSIONS INCH (METRIC)		
	L1	D1	B
250102	1.34 (34)	(6)	(12)
250122	1.57 (40)	(8)	(17)



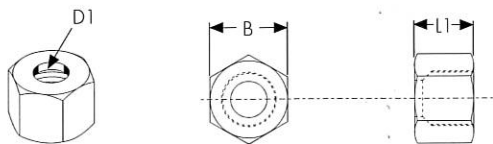
90° DOUBLE COMPRESSION UNION

Part No.	DIMENSIONS INCH (METRIC)			
	L1	L2	B	D1
250104	1.06 (27)	1.06 (27)	(12)	(6)
250124	1.14 (29)	1.14 (29)	(17)	(8)



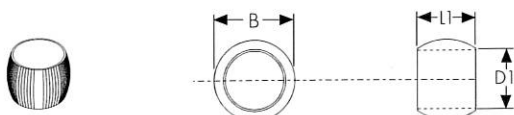
COMPRESSION TEE UNION

Part No.	DIMENSIONS INCH (METRIC)			
	L1	L2	B	D1
250105	2.12 (54)	1.06 (27)	(12)	(6)
250125	2.28 (58)	1.14 (29)	(17)	(8)



COMPRESSION NUTS

Part No.	DIMENSIONS INCH (METRIC)		
	L1	D1	B
250109	0.39 (10)	(6)	(12)
250129	0.51 (13)	(8)	(17)



COMPRESSION SLEEVES

Part No.	DIMENSIONS INCH (METRIC)			
	TUBE O.D.	L1	D1	B
250108	(6mm)	0.24 (6)	0.24 (6)	0.31 (8)
250128	(8mm)	0.31 (8)	0.31 (8)	0.43 (11)